

## ADDENDUM NO. 1

To: All Plan Holders of Record and Interested Parties  
City of Galena, Illinois  
Project: Utility Systems Improvements 2022  
West Street, Dodge Street, and High Street  
Project No.: 22112  
Issue Date: July 27, 2022  
Bids Due: August 2, 2022 at 10:00 a.m.

---

The following additions, revisions, corrections, and clarifications contained herein shall become part of the Construction Contract Documents for the Project, and shall be included in the Scope of Work and Bid Proposals to be submitted. References made below to Specifications and Construction Drawings shall be used as a general guide only. Bidders shall determine for themselves the full scope of work affected by the Addendum items.

---

The following Addendum is part of the Construction Contract Documents dated July 15, 2022.

This Addendum consists of the following:

Addendum No. 1 (2 pages)  
Revised Bid Schedule (2 pages)  
Revised Plan Sheets: G0.05, G0.06, C5.20, C5.30, C6.02, C6.20, C6.30 (7 pages)

### CHANGES TO CONTRACT DOCUMENTS:

1. **BID SCHEDULE:** The attached bid schedule has the updated quantities per the added services and water main connection change in the attached updated plan sheets and as described below. Bidders are required to submit the revised bid schedule.



### CHANGES TO DRAWINGS:

1. **PLAN SHEET G0.04:** The following statement shall be added to this plan sheet under the appropriate sections: American Flow Control Waterous gate valves and Classic Pacer hydrants are considered approved alternates for the project. The Waterous gate valves and hydrants shall meet the requirements identified in the plans and the Standard Specifications for Water and Sewer Construction in Illinois including the pump nozzle having a 5-inch Storz-Style connection.
2. **PLAN SHEET G0.05:** Bid Item #10 (Earthwork, Inc. Pavement Removal) shall have the following statement added:
  - a. The cut volume includes both the removal of the existing pavement as identified but also any additional cut as required for the proposed roadway improvements including behind the proposed curb or granular shoulder. The fill volume consists of the backfill behind the curb and gutter and any fill behind the granular shoulder as already indicated.

As identified in Bid Item #41 (Stone Base) the proposed profile adjustments as identified on the plans shall be accomplished utilizing compacted stone base, placed at 12" maximum thick lifts.
3. **PLAN SHEET G0.05 AND G0.06:** These sheets have been updated and included in this addendum including updated quantities per the revised bid schedule.
4. **PLAN SHEET C5.20:** The connection to the existing water main on the south end of the water main has been updated.

5. PLAN SHEET C5.30: This plan sheet has been updated to show modifications to residences that have services near the intersection of High Street and Gear Street. There are two additional services on the east side of the street and one less on the west side of the street. These residences have water services that are connected to the existing 4" water main and will need to be relocated to the existing 10" water main on High Street. These services have been added to the updated plans which are attached to this addendum.
6. PLAN SHEET C6.02: The IDOT Standard Detail for a Storm Sewer Intake – Median Style 54256-01 (Bid Item #35) has been added to this details sheet. The frame and grate for Storm Sewer Intake – Median Style 54256-01 shall consist of a cast iron frame and grate with dual grates. The frame and grate shall be a Neenah R-3807 or approved alternate. A detail has been added to this plan sheet (101-C Catch Basin). The 101-C Catch Basin is an approved alternate to the Storm Sewer Intake – Median Style 54256-01 (Bid Item #35).
7. PLAN SHEET C6.20: This plan sheet has been updated to show the pavement replacement/rehabilitation with the changes to the water main connection on the south end of the proposed water main.
8. PLAN SHEET C6.30: This plan sheet has been updated to show the pavement replacement/rehabilitation with the changes to the water services near the Gear Street and High Street intersection.

***It is required to acknowledge this addendum on the Bid Proposal Form.***

	FOR Origin Design Co.
	 <div style="text-align: right;">7/27/2022</div>
	Christopher A. Becklin, P.E. License Number 062-071513 Licensed Professional Engineer of Illinois My license renewal date is November 30, 2023 Pages or sheets covered by this seal: Addendum No. 1

**END OF ADDENDUM NO. 1**

**CITY OF GALENA, ILLINOIS**  
**UTILITY SYSTEM IMPROVEMENTS 2022**  
**WEST STREET, DODGE STREET, AND HIGH STREET**

**BID SCHEDULE**  
**REVISED PER ADDENDUM NO. 1**

NO.	DESCRIPTION	QUANTITY	UNIT PRICE	TOTAL PRICE
1	Mobilization & Miscellaneous	1 LS		
2	Traffic Control	1 LS		
3	Inlet Protection: Install, Maintain & Removal	18 EA		
4	Straw Wattles: Install, Maintain & Removal	110 LF		
5	Clearing & Grubbing	1 LS		
6	Exploratory Excavation	10 HRS		
7	Concrete Washout	3 EA		
8	Construction Entrance	230 SY		
9	Topsoil: Strip & Stockpile	280 CY		
10	Earthwork, incl. Pavement Removal	860 CY		
11	Pavement Removal	810 SY		
12	4" PVC Water Main, DR 18	8 LF		
13	6" PVC Water Main, DR 18	1,390 LF		
14	6" DIP Hydrant Lead	55 LF		
15	6" MJ Valve	11 EA		
16	Fire Hydrant, Complete	5 EA		
17	4" MJ Restraint	6 EA		
18	6" MJ Restraint	55 EA		
19	6" Push-On Joint Restraint	1 EA		
20	Compact DI Fittings & Water Main	800 LBS		
21	Connection to Existing Water Main	5 EA		
22	3/4" Water Service (Corp Stop to Curb Stop)	680 LF		
23	3/4" Water Service (Curb Stop to Residence)	525 LF		
24	Lead Service Line Replacement to Meter	15 EA		
25	3/4" Corporation Stop	27 EA		
26	3/4" Curb Stop and Curb Box	27 EA		
27	Select Trench Backfill, Water Main	1,890 LF		
28	4" PVC Sanitary Sewer Service	180 LF		
29	8" PVC Sanitary Sewer Service	275 LF		
30	Sanitary Manhole Frame & Cover	1 EA		
31	Sanitary Sewer Manhole Sidewall, 48" ID	7.5 VF		
32	Select Trench Backfill, Sanitary Sewer	260 LF		
33	15" RCP Storm Sewer	45 LF		
34	15" RCP FES	2 EA		
35	Storm Sewer Intake - Median Style 54256-01	1 EA		
36	Storm Intake - 101-B Style	1 EA		

This bid schedule accompanies the bid proposal of \_\_\_\_\_

**CITY OF GALENA, ILLINOIS  
UTILITY SYSTEM IMPROVEMENTS 2022  
WEST STREET, DODGE STREET, AND HIGH STREET**

**BID SCHEDULE  
(continued)  
REVISED PER ADDENDUM NO. 1**

<b>NO.</b>	<b>DESCRIPTION</b>	<b>QUANTITY</b>	<b>UNIT PRICE</b>	<b>TOTAL PRICE</b>
37	Riprap	30 TON		
38	Rock Excavation incl. Backfill	100 CY		
39	PCC Curb & Gutter	1,390 LF		
40	PCC Curb & Gutter, Remove and Replace	40 LF		
41	Stone Base	2,800 TON		
42	Granular Surfacing	50 TON		
43	Granular Surfacing, CA 1	70 TON		
44	PCC Collar Around Water Valve Boxes	8 EA		
45	PCC Collar Around Sanitary Sewer Manholes	7 EA		
46	Manhole Adjustment	6 EA		
47	HMA Surface Removal	300 SY		
48	HMA Leveling Binder Course, N50, 0-2"	370 TON		
49	HMA Surface Course Mix C, N50, 2"	550 TON		
50	Tack Coat CSS-1H	330 GAL		
51	PCC Driveway	180 SY		
52	HMA Driveway, Remove and Replace	40 SY		
53	PCC Sidewalk, Remove and Replace	35 SY		
<b>TOTAL OF BID</b>				

This bid schedule accompanies the bid proposal of \_\_\_\_\_





30	SANITARY MANHOLE FRAME & COVER	1	EA	UNIT PRICE INCLUDES, BUT IS NOT LIMITED TO, FURNISHING AND INSTALLING THE FRAME AND COVER INCLUDING CHIMNEY SEAL.
31	SANITARY SEWER MANHOLE SIDEWALL, 48" ID	7.5	VF	MEASUREMENT FOR SANITARY SEWER MANHOLE SIDEWALL WILL BE MEASURED BY THE VERTICAL FOOT OF MANHOLE INSTALLED MEASURED FROM THE DEEPEST FLOWLINE TO THE FINAL RIM ELEVATION. UNIT PRICE INCLUDES, BUT IS NOT LIMITED TO, FURNISHING AND INSTALLING MANHOLE SIDEWALL, INCLUDING REQUIRED JOINT GASKETS AND ACCESSORIES AS REQUIRED, EXCAVATION AND BACKFILLING.
32	SELECT TRENCH BACKFILL, SANITARY SEWER	260	LF	MEASUREMENT FOR THE SELECT TRENCH BACKFILL WILL BE ALONG THE CENTERLINE OF THE SANITARY SEWER MAIN AND SANITARY SEWER SERVICES WHERE SELECT TRENCH BACKFILL IS REQUIRED. UNIT PRICE INCLUDES, BUT IS NOT LIMITED TO, FURNISHING, HAULING, AND PLACING BACKFILL MATERIAL.
33	15" RCP STORM SEWER	45	LF	STORM SEWER REINFORCED CONCRETE PIPE SHALL BE CONFORMING TO ASTM C76 WITH ASTM C443 FLAT GASKET JOINTS OR ASTM C361 "O-RING" JOINTS. MEASUREMENT: MEASUREMENT OF STORM SEWER SHALL BE FROM END OF PIPE OR TO FRONT FACE OF STRUCTURE, EXCLUSIVE OF APRONS. UNIT PRICE INCLUDES, BUT NOT LIMITED TO, TRENCH EXCAVATION, DEWATERING, FURNISHING AND INSTALLING PIPE, FURNISHING AND PLACING, COMPACTING BEDDING AND BACKFILL MATERIAL, JOINT WRAPPING, PIPE JOINTS.
34	15" RCP FES	2	EA	UNIT PRICE INCLUDES, BUT NOT LIMITED TO, TRENCH EXCAVATION, DEWATERING, FURNISHING AND INSTALLING PIPE, FURNISHING, PLACING AND COMPACTING BEDDING AND BACKFILL MATERIAL, JOINTS.
35	STORM SEWER INTAKE - MEDIAN STYLE 54256-01	1	EA	UNIT PRICE INCLUDES, BUT IS NOT LIMITED TO, EXCAVATION, FURNISHING AND INSTALLING STRUCTURE, FURNISHING, PLACING AND COMPACTING BEDDING AND BACKFILL MATERIAL, CONCRETE FILLETS, PIPE CONNECTIONS, CASTINGS AND ADJUSTING RINGS.
36	STORM INTAKE - 101-B STYLE	1	EA	UNIT PRICE INLCUDES, BUT NOT LIMITED TO, EXCAVATION, FURNISHING, PLACING, AND COMPACTING BEDDING AND BACKFILL MATERIAL, BASE, STRUCTURAL CONCRETE, REFORCING STEEL, PRECAST UNITS (IF USED), CONCRETE FILLETS, PIPE CONNECTIONS, CASTINGS AND ADJUSTMENT RINGS.
37	RIP RAP	30	TON	RIP RAP TO BE RR-4 PER THE ILLINOIS DOT STANDARD SPECIFICATIONS FOR ROAD AND BRIDGE CONSTRUCTION. UNIT PRICE INCLUDES, BUT IS NOT LIMITED TO, EXCAVATION, FURNISHING AND INSTALLING RIP RAP MATERIAL, FURNISHING AND INSTALLING NON-WOVEN ENGINEERING FABRIC.
38	ROCK EXCAVATION, INC. BACKFILL	100	CY	THIS BID ITEM COST SHALL BE INCLUDE, BUT NOT LIMITED TO, REMOVAL AND DISPOSAL OF ROCK FROM UTILIY TRENCH EXCAVATION, PRV INSTALLATION, INSTALLING SELECT GRANULAR MATERIAL. ROCK IS DEFINED AS BOULDERS OR SEDIMENTARY DEPOSITS THAT CANNOT BE REMOVED IN TRENCHES WITHOUT CONTINUOUS USE OF PNEUMATIC OR HYDRAULIC TOOLS. BOULDERS SHALL NOT BE CLASSIFIED AS ROCK UNLESS LARGER THAN ONE-HALF CUBIC YARDS.
39	PCC CURB & GUTTER	1,390	LF	THIS BID ITEM IS FOR USE FOR THE PROPOSED PCC CURB AND GUTTER ON WEST STREET. THIS BID ITEM UNIT COST SHALL INCLUDE, BUT NOT LIMITED TO, FURNISHING AND PLACING PCC, BARS AND REINFORCEMENT, JOINTS AND SEALING, SURFACE CURING AND PAVEMENT PROTECTION, AND BOXOUTS FOR FIXTURES.
40	PCC CURB & GUTTER, REMOVE & REPLACE	40	LF	THIS BID ITEM IS FOR USE FOR THE PROPOSED PCC CURB AND GUTTER REMOVAL AND REPLACEMENT ON DODGE AND HILL STREETS NECESSARY TO MAKE THE PROPOSED WATER MAIN AND SERVICE IMPROVEMENTS. THIS BID ITEM UNIT COST SHALL INCLUDE, BUT NOT LIMITED TO, SAWING AND REMOVING AND DISPOSING OF EXISTING PAVEMENT BARS AND REINFORCEMENT, PROVIDING AND PLACING PCC, JOINTS AND SEALING, SURFACE CURING AND PAVEMETN PROTECTION.
41	STONE BASE	2,800	TON	STONE BASE SHALL BE PAID FOR UNDER HMA PAVEMENT WHERE FULL DEPTH REMOVALS ARE PROPOSED, PROFILE ADJUSTMENT AREAS, PCC CURB AND GUTTER, AND PCC DRIVEWAY. UNIT PRICE INCLUDES, BUT NOT LIMITED TO, FURNISHING, PLACING, COMPACTING OF SUBBASE INCLUDING TRIMMING TO THE PROPER GRADE. PLACEMENT SHALL BE COMPLETED IN ACCORDANCE WITH PLAN NOTES AND ILLINOIS DOT STANDARD SPECIFICATIONS FOR STONE BASE.
42	GRANULAR SURFACING	50	TON	THIS BID ITEM SHALL INCLUDE THE GRANULAR SURFACING REQUIRED FOR THE GRANULAR DRIVEWAYS IN THE LOCATIONS IDENTIFIED ON THE PLANS. ADDITIONAL, LOCATIONS AND LIMITS OF GRANULAR SURFACING PLACEMENT SHALL RECEIVE APPROVAL FROM THE ENGINEER.THE BID ITEM SHALL INCLUDES, BUT NOT LIMITED TO, EXCAVATION, SUBGRADE PREPARATION, FURNISHING AND PLACING AND COMPACTING THE GRANULAR SURFACING.
43	GRANULAR SURFACING, CA 1	70	TON	THIS BID ITEM SHALL INCLUDE THE GRANULAR SURFACING REQUIRED FOR THE GRANULAR SHOULDER (WEST STREET) IN THE LOCATIONS IDENTIFIED ON THE PLANS. THE GRANULAR SHOULDER ON WEST STREET SHALL CONSIST OF CA 1 IN ACCORDANCE WITH THE ILLINOIS DOT STANDARD SPECIFICATIONS. ADDITIONAL, LOCATIONS AND LIMITS OF GRANULAR SURFACING PLACEMENT SHALL RECEIVE APPROVAL FROM THE ENGINEER.THE BID ITEM SHALL INCLUDES, BUT NOT LIMITED TO, EXCAVATION, SUBGRADE PREPARATION, FURNISHING AND PLACING AND COMPACTING THE GRANULAR SURFACING.
44	PCC COLLAR AROUND WATER VALVE BOXES	8	EA	PCC CONCRETE COLLARS AROUND WATER VALVE BOXES SHALL BE INSTALLED IN PROPOSED PAVING OR PAVEMENT REHABILITATION AREAS. UNIT PRICE SHALL INCLUDE THE FOLLOWING, BUT NOT LIMITED TO, EXCAVATION, CONCRETE, BARS AND REINFORCEMENT, JOINTS AND SEALING, SURFACE CURING AND PAVEMENT PROTECTION.
45	PCC COLLAR AROUND SANITARY SEWER MANHOLES	7	EA	PCC CONCRETE COLLARS AROUND SANITARY SEWER MANHOLES SHALL BE INSTALLED PROPOSED PAVING OR PAVEMENT REHABILITATION AREAS. UNIT PRICE SHALL INCLUDE THE FOLLOWING, BUT NOT LIMITED TO, EXCAVATION, CONCRETE, BARS AND REINFORCEMENT, JOINTS AND SEALING, SURFACE CURING AND PAVEMENT PROTECTION.

46	MANHOLE ADJUSTMENT	6	EA	THIS BID ITEM SHALL INCLUDE, BUT IS NOT LIMITED TO, FURNISHING AND INSTALLING ADJUSTING RINGS AND REINSTALLING THE EXISTING FRAME AND COVER TO THE PROPER GRADES FOR THE PROPOSED PAVEMENT REPLACEMENT AND REHABILITATION.
47	HMA SURFACE REMOVAL	300	SY	THIS BID ITEM IS TO BE USED FOR WHERE MILLING OR GRINDING IS IDENTIFIED ON THE PLANS. THE BID ITEM SHALL INCLUDE, BUT NOT LIMITED TO, MILLING OR GRINDING OF THE EXISTING HMA TO A DEPTH OF 2" BELOW THE EXISTING SURFACE UNLESS OTHERWISE APPROVED BY THE OWNER, DISPOSING OF THE HMA MILLINGS OR GRINDINGS. THE CITY SHALL HAVE RIGHT TO FIRST REFUSAL OF THE MATERIAL IF THE CITY ELECTS TO KEEP THE MATERIAL THE CONTRACTOR SHALL DELIVER IT TO A LOCATION IDENTIFIED BY THE CITY.
48	HMA LEVELING BINDER COURSE, N50, 0-2"	370	TON	THIS BID ITEM SHALL INCLUDE, BUT NOT LIMITED TO, FURNISHING AND PLACING ASPHALT MIX WITH ASPHALT BINDER, PRIME COAT ON EXISTING SURFACE/STONE BASE AND CONSTRUCTION ZONE PROTECTION.
49	HMA SURFACE COURSE MIX C, N50, 2"	550	TON	THIS BID ITEM SHALL INCLUDE, BUT NOT LIMITED TO, FURISHING AND PLACING ASPHALT MIX WITH ASPHALT BINDER, AND CONSTRUCTION ZONE PROTECTION.
50	TACK COAT CSS-1H	330	GAL	THIS BID ITEM SHALL INCLUDE, BUT NOT LIMITED TO, FURNISHING AND PLACING TACK COAT.
51	PCC DRIVEWAY	180	SY	THIS BID ITEM INCLUDES, BUT IS NOT LIMITED TO EXCAVATION, SUBGRADE PREPARATION, FURNISHING AND PLACING PCC, JOINTING INCLUDING EXPANSION JOINTS AS REQUIRED.
52	HMA DRIVEWAY, REMOVE AND REPLACE	40	SY	THIS BID ITEM SHALL BE UTILIZED WHERE HMA DRIVEWAYS ARE REMOVED TO MAKE THE PROPOSED IMPROVEMENTS AND ARE TO BE REPLACED WITH HMA. HMA DRIVEWAYS SHALL BE REPLACED TO A DEPTH OF 4" IN A MINIMUM OF TWO LIFTS. THIS BID ITEM SHALL INCLUDE, BUT NOT LIMITED TO, FURNISHING AND PLACING ASPHALT MIX WITH ASPHALT BINDER, PRIME COAT ON SUBBASE AND CONSTRUCTION ZONE PROTECTION.
53	PCC SIDEWALK, REMOVE AND REPLACE	35	SY	THIS BID ITEM INCLUDES, BUT IS NOT LIMITED TO, SAWING, HAULING AND DISPOSAL OF MATERIALS REMOVED, EXCAVATION, SUBGRADE PREPARATION, FURNISHING AND PLACING PCC, JOINTING INCLUDING EXPANSION JOINTS AS REQUIRED.



WORKING ON TOMORROW.

800 556-4491  
origindesign.com

© COPYRIGHT 2022  
ALL RIGHTS RESERVED.  
THESE DOCUMENTS HAVE BEEN  
PREPARED SPECIFICALLY FOR THIS  
PROJECT ONLY. NO PART OF THIS  
DOCUMENT MAY BE REPRODUCED  
OR DISTRIBUTED IN ANY FORM  
WITHOUT THE PERMISSION OF  
ORIGIN DESIGN. ALL INFORMATION  
IN THIS DOCUMENT IS CONSIDERED  
PROPERTY OF ORIGIN DESIGN.

Project Description

GENERAL  
BID ITEM NOTES

CITY OF GALENA, ILLINOIS  
UTILITY SYSTEMS IMPROVEMENTS 2022  
WEST STREET, DODGE STREET, AND HIGH STREET  
P:\22\112\DRAWINGS\CIVIL\22112.ZZ 00 G.DWG 7/26/2022 1:42 PM KATIE RASH

Drawing Issue Information

Project Mgr: CAB  
Issued For Bidding: 07-15-22

Drawn By: KER  
Issued For Construction: .

Rev

ADDENDUM 1

7-27-22

By

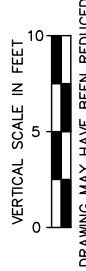
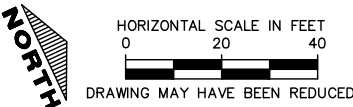
KER

Date

Sheet No:

G0.06

Project No: 22112



**800 556-4491**  
**origindesign.com**

© COPYRIGHT 2022  
ALL RIGHTS RESERVED.  
THESE DOCUMENTS HAVE BEEN  
PREPARED SPECIFICALLY FOR THIS  
PROJECT ONLY. NO PART OF THIS  
DOCUMENT MAY BE REPRODUCED  
OR DISTRIBUTED IN ANY FORM  
WITHOUT THE PERMISSION OF  
ORIGIN DESIGN. ALL INFORMATION  
IN THIS DOCUMENT IS CONSIDERED  
PROPERTY OF ORIGIN DESIGN.

# WATER AND SANITARY SEWER WATER PLAN AND PROFILE

CITY OF GALENA, ILLINOIS  
UTILITY SYSTEMS IMPROVEMENTS 2022  
WEST STREET, DODGE STREET, AND HIGH STREET  
U:\112\DRAWINGS\CIVIL\22112\_ZZ - 03 PP.DWG WATER.DWG 7/26/2022 1:43 PM KATIE

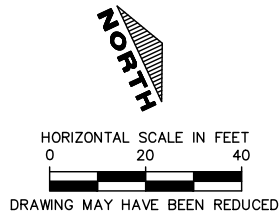
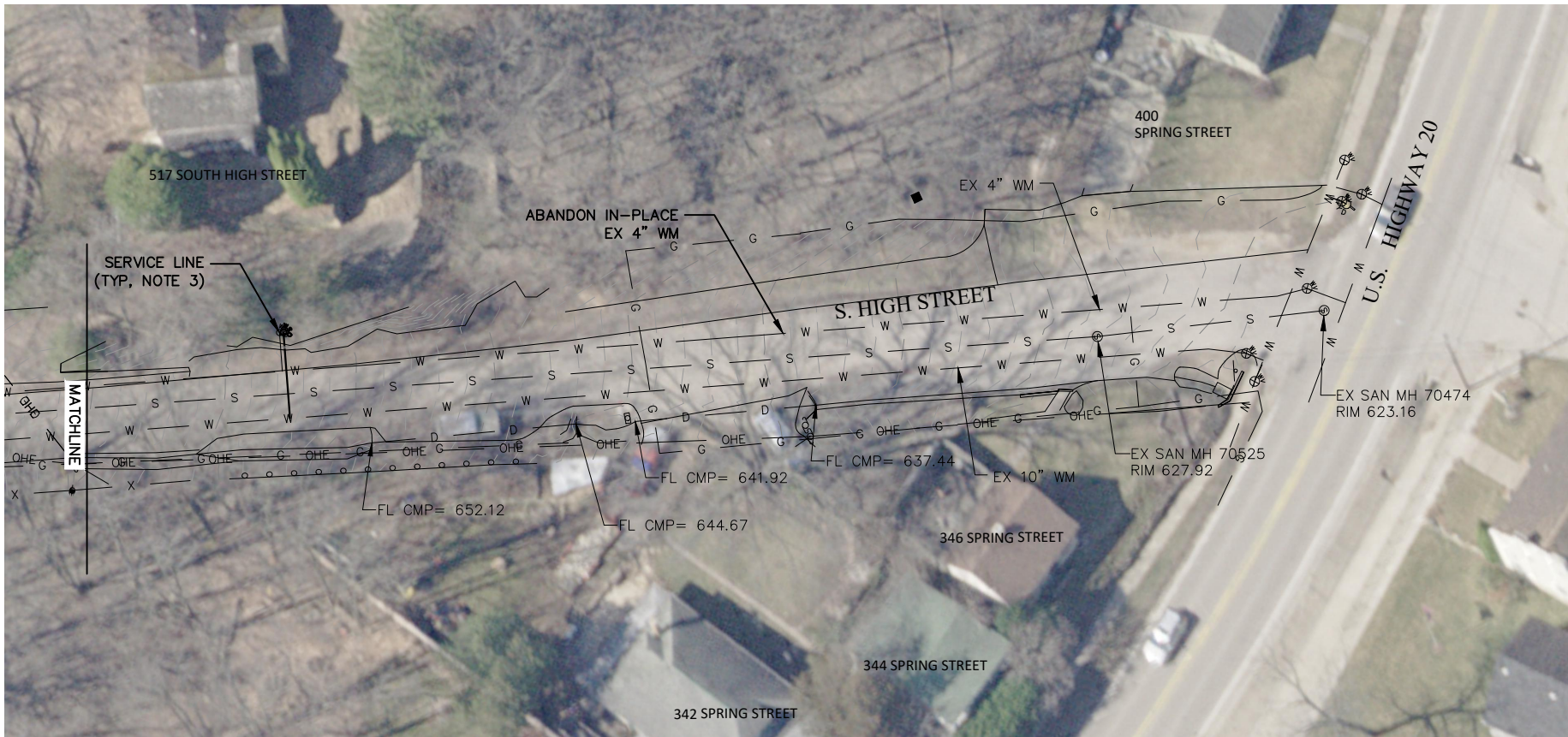
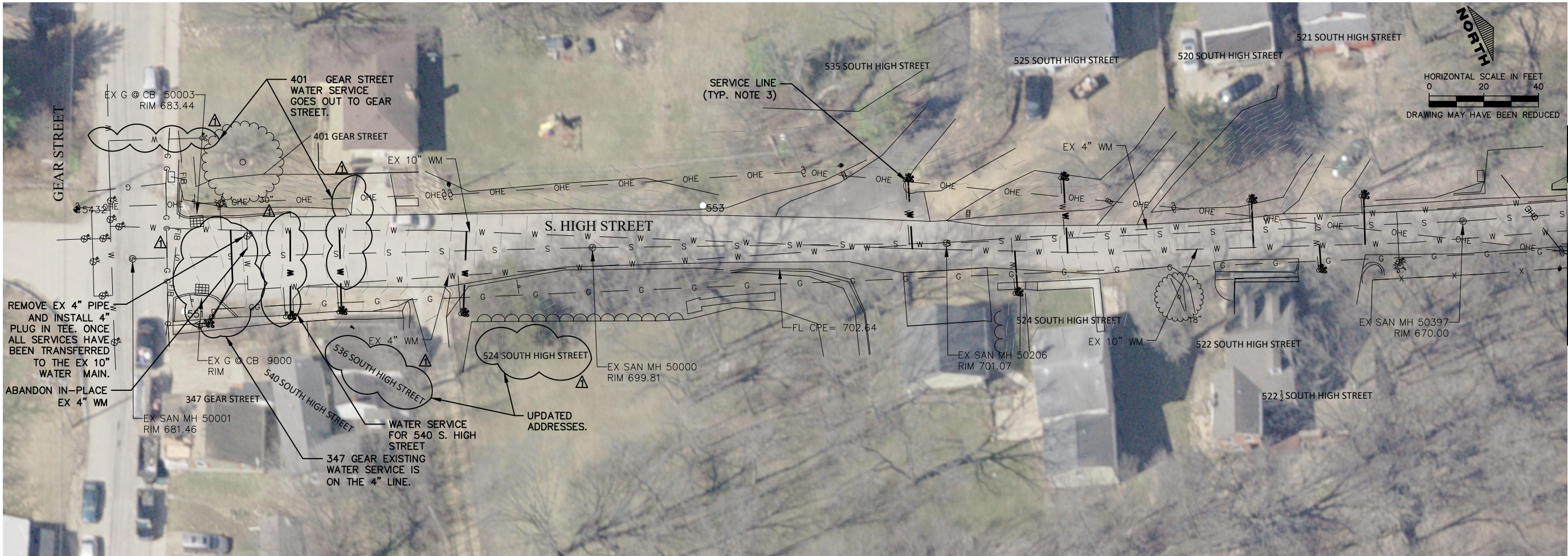
Drawing Issue Information		Drawn By: KER	
Project Mgr: CAB			
Issued For Bidding: 07-15-22		Issued For Construction: .	
.	.	.	.
.	.	.	.
.	.	.	.
.	.	.	.
.	.	.	.
ADDENDUM 1	7-27-22	KER	
Rev	Description	Date	By

Sheet No: (

# C5.20

Project No: 22112





NOTES

1. THE LOCATION OF UTILITIES INDICATED ON THE PLAN ARE TAKEN FROM FIELD MEASUREMENTS, MAPS, AND EXISTING PUBLIC RECORDS. ADDITIONAL FACILITIES OTHER THAN THOSE SHOWN MAY BE PRESENT, INCLUDING PRIVATE LINES. THE UTILITIES PRESENT MAY NOT EXIST AS SHOWN. IT SHALL BE THE DUTY OF ANYONE MAKING USE OF THESE PLANS TO ASCERTAIN THE EXACT LOCATION, SIZE AND ELEVATION OF ALL UTILITIES PRESENT.
2. ALL CROSSINGS OF EXISTING UTILITIES SHALL BE FIELD VERIFIED FOR LOCATION AND ELEVATION.
3. CONTRACTOR TO FIELD LOCATE EXISTING SERVICE LINES AND CURB BOXES. CURB BOXES AND SERVICE LINES MAY NOT BE SHOWN IN EXACT LOCATIONS. CONTRACTOR TO INSTALL NEW SERVICE LINES, CURB STOPS, AND CURB BOXES.
4. CONTRACTOR SHALL ABANDON-IN-PLACE THE EX 4" WATER MAIN. PIPE ENDS SHALL BE PLUGGED WITH CONCRETE. CONTRACTOR SHALL REMOVE AND DISPOSE OF TOP SECTION OF VALVE BOXES AND OPERATING SYSTEMS AND FILL WITH SUITABLE MATERIAL FOR ANY VALVES BEING ABANDONED. CONTRACTOR SHALL REMOVE AND DISPOSE ANY EXISTING PIPE, FITTINGS, VALVES, AND APPURTENANCE THAT IS TO BE ABANDONED AND IN THE WAY OF CONSTRUCTION. THIS SHALL BE CONSIDERED INCIDENTAL TO THE WATER MAIN IMPROVEMENTS.

origin  
design

WORKING ON TOMORROW.

800 556-4491  
origindesign.com

© COPYRIGHT 2022  
ALL RIGHTS RESERVED.  
THESE DOCUMENTS HAVE BEEN  
PREPARED SPECIFICALLY FOR THIS  
PROJECT ONLY. NO PART OF THIS  
DOCUMENT MAY BE REPRODUCED  
OR DISTRIBUTED IN ANY FORM  
WITHOUT THE PERMISSION OF  
ORIGIN DESIGN. ALL INFORMATION  
IN THIS DOCUMENT IS CONSIDERED  
PROPERTY OF ORIGIN DESIGN.

WATER AND SANITARY SEWER

WATER PLAN

SOUTH HIGH STREET  
CITY OF GALENA, ILLINOIS

UTILITY SYSTEMS IMPROVEMENTS 2022

WEST STREET, DODGE STREET, AND HIGH STREET

P: 22112 DRAWINGS: CIVIL 22112.ZZ -05 PP: HIGH ST WATER.DWG 7/26/2022 1:43 PM KATE BASH

Project Description

Drawing Issue Information

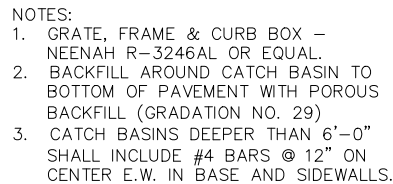
Sheet No:

C5.30

Project No: 22112

Rev	Description	Date	By
7-27-22	KER		
ADDENDUM 1			

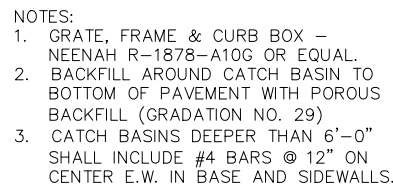




REINFORCING SCHEDULE			
MARK	DIAMETER	LENGTH	SPACING
A	1/2"	1'-0"	17 1/2"
B	1/2"	1'-0"	38"
C	5/8"	8 1/2"	10"
D	5/8"	8 1/2"	11"
E	5/8"	8"	

## C6.02

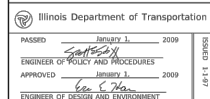
NOT TO SCALE



REINFORCING SCHEDULE			
MARK	DIAMETER	LENGTH	SPACING
A	1 1/2"	1'-0"	17 1/2"
B	1 1/2"	1'-0"	44"
C	5/8"	9"	13"
D	5/8"	9"	13"

## C6.02

NOT TO SCALE



DATE	REVISIONS
1-1-09	Switched units to English (metric).
1-1-97	Renum. Standard 2240-6.

**FLUSH INLET BOX  
FOR MEDIAN**

STANDARD 542546-01

**origin.**  
design.  
WORKING ON TOMORROW.  
800 556-4491  
origindesign.com

© COPYRIGHT 2022  
ALL RIGHTS RESERVED.  
THESE DOCUMENTS HAVE BEEN  
PREPARED SPECIFICALLY FOR THIS  
PROJECT ONLY. NO PART OF THIS  
DOCUMENT MAY BE REPRODUCED  
OR DISTRIBUTED IN ANY FORM  
WITHOUT THE PERMISSION OF  
ORIGIN DESIGN. ALL INFORMATION  
IN THIS DOCUMENT IS CONSIDERED  
PROPERTY OF ORIGIN DESIGN.

Description

PAVING AND STORM SEWER DETAILS

CITY OF GALENA, ILLINOIS  
UTILITY SYSTEMS IMPROVEMENTS 2022  
WEST STREET, DODGE STREET, AND HIGH STREET  
P:\22\112\DRAWINGS\CIVIL\22112\_ZZ\_06.DWG 7/26/2022 1:43 PM KATIE RASH

Project Description

[illegible]

Sheet No:

## C6.02

Project No: 22112

GEAR STREET

2" HMA OVERLAY

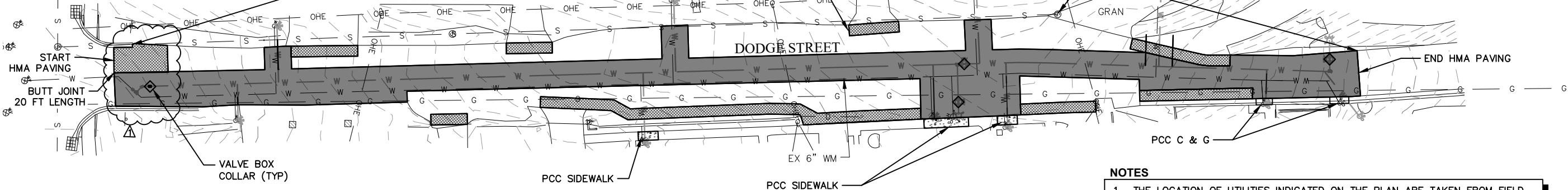
MILLED 4 FT  
WIDTH (TYP)

SAN MH  
COLLAR (TYP)

DODGE STREET

HORIZONTAL SCALE IN FEET  
0 20 40  
DRAWING MAY HAVE BEEN REDUCED

NORTH



NOTES

1. THE LOCATION OF UTILITIES INDICATED ON THE PLAN ARE TAKEN FROM FIELD MEASUREMENTS, MAPS, AND EXISTING PUBLIC RECORDS. ADDITIONAL FACILITIES OTHER THAN THOSE SHOWN MAY BE PRESENT, INCLUDING PRIVATE LINES. THE UTILITIES PRESENT MAY NOT EXIST AS SHOWN. IT SHALL BE THE DUTY OF ANYONE MAKING USE OF THESE PLANS TO ASCERTAIN THE EXACT LOCATION, SIZE AND ELEVATION OF ALL UTILITIES PRESENT.
2. COORDINATE EXACT MILLING AND HMA OVERLAY EXTENTS WITH CITY ENGINEER.

LEGEND

- 4" HMA OVERLAY WATER MAIN & SERVICE TRENCHES
- MILLED 2" DEPTH WITH 2" HMA OVERLAY

origin  
design

WORKING ON TOMORROW.

800 556-4491  
origindesign.com

© COPYRIGHT 2022  
ALL RIGHTS RESERVED.  
THESE DOCUMENTS HAVE BEEN  
PREPARED SPECIFICALLY FOR THIS  
PROJECT ONLY. NO PART OF THIS  
DOCUMENT MAY BE REPRODUCED  
OR DISTRIBUTED IN ANY FORM  
WITHOUT THE PERMISSION OF  
ORIGIN DESIGN. ALL INFORMATION  
IN THIS DOCUMENT IS CONSIDERED  
PROPERTY OF ORIGIN DESIGN.

PAVING AND STORM SEWER  
PLAN

DODGE STREET  
CITY OF GALENA, ILLINOIS  
UTILITY SYSTEMS IMPROVEMENTS 2022  
WEST STREET, DODGE STREET, AND HIGH STREET  
P:\22\112\DRAWINGS\CIVIL\22112\_ZZ -06\_PP-DODGE\_ST\_HGA\_STD.WG 7/26/2022 1:43 PM KATE RASH

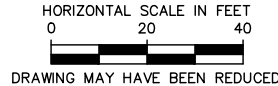
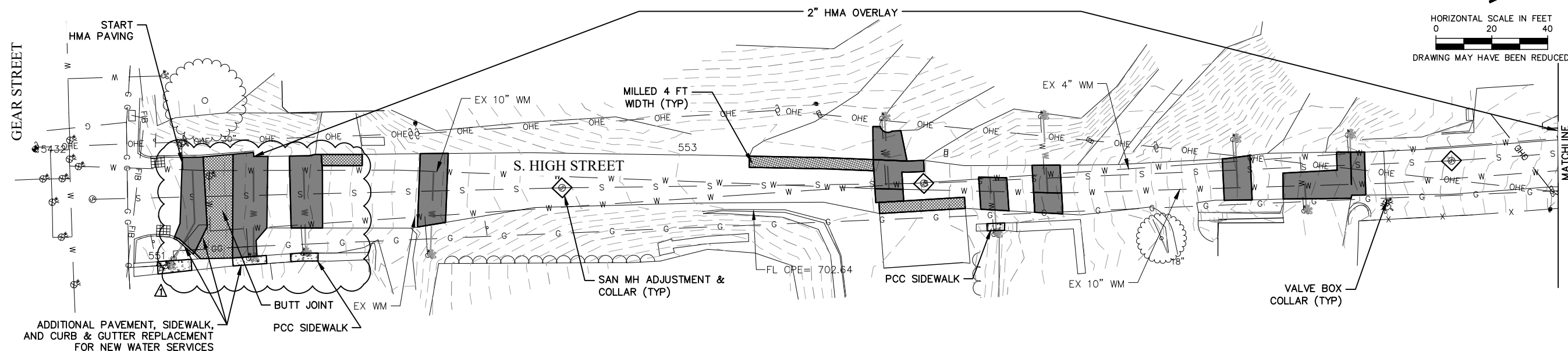
Drawing Issue Information		Project Description	
Project Mgr: CAB	Drawn By: KER	PAVING AND STORM SEWER PLAN DODGE STREET CITY OF GALENA, ILLINOIS UTILITY SYSTEMS IMPROVEMENTS 2022 WEST STREET, DODGE STREET, AND HIGH STREET	By
Issued For Bidding: 07-15-22	Issued For Construction: .		
Rev	Description		
ADDENDUM 1	7-27-22		
BEW	Date		

Sheet No:

C6.20

Project No: 22112

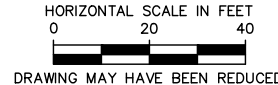
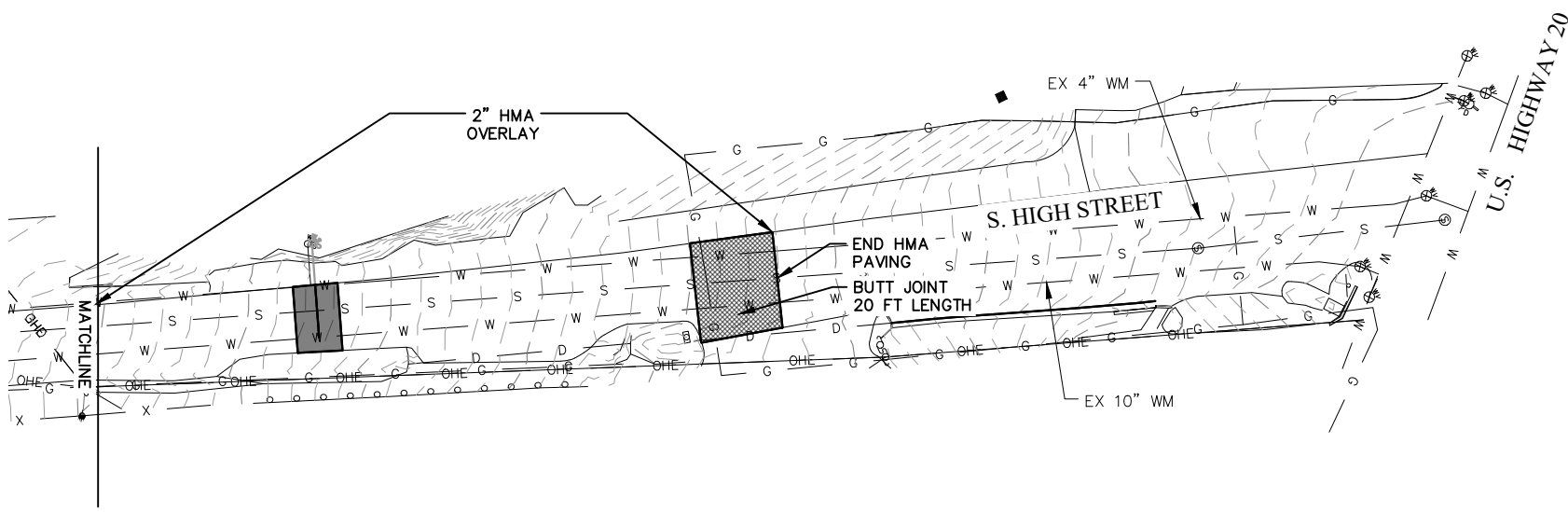




**LEGEND**

	4" HMA OVERLAY WATER MAIN & SERVICE TRENCHES
	MILLED 2" DEPTH WITH 2" HMA OVERLAY

- NOTES**
1. THE LOCATION OF UTILITIES INDICATED ON THE PLAN ARE TAKEN FROM FIELD MEASUREMENTS, MAPS, AND EXISTING PUBLIC RECORDS. ADDITIONAL FACILITIES OTHER THAN THOSE SHOWN MAY BE PRESENT, INCLUDING PRIVATE LINES. THE UTILITIES PRESENT MAY NOT EXIST AS SHOWN. IT SHALL BE THE DUTY OF ANYONE MAKING USE OF THESE PLANS TO ASCERTAIN THE EXACT LOCATION, SIZE AND ELEVATION OF ALL UTILITIES PRESENT.
  2. COORDINATE EXACT MILLING AND HMA OVERLAY EXTENTS WITH CITY ENGINEER.



WORKING ON TOMORROW.

800 556-4491  
origindesign.com

© COPYRIGHT 2022  
ALL RIGHTS RESERVED.  
THESE DOCUMENTS HAVE BEEN  
PREPARED SPECIFICALLY FOR THIS  
PROJECT ONLY. NO PART OF THIS  
DOCUMENT MAY BE REPRODUCED  
OR DISTRIBUTED IN ANY FORM  
WITHOUT THE PERMISSION OF  
ORIGIN DESIGN. ALL INFORMATION  
IN THIS DOCUMENT IS CONSIDERED  
PROPERTY OF ORIGIN DESIGN.

PAVING AND STORM SEWER  
PLAN

SOUTH HIGH STREET  
CITY OF GALENA, ILLINOIS

UTILITY SYSTEMS IMPROVEMENTS 2022  
WEST STREET, DODGE STREET, AND HIGH STREET

Project Description

P-22-112 DRAWINGS CIVIL 22112 ZZ -06 PP-DODGE ST. HIGH STREET 7/26/2022 2:20 PM KATIE RASH

Drawing Issue Information

Project Mgr: CAB  
Issued For Bidding: 07-15-22

Drawn By: KER  
Issued For Construction: .

Rev	Description	Date	By
1	ADDENDUM 1	7-27-22	KER

Sheet No:

C6.30

Project No: 22112