

Ordinance #O.24.01

An Ordinance **ANNEXING 3.74 ACRES OF TERRITORY IN RAWLINS TOWNSHIP.**

Adopted by the City Council of the City of Galena on this 8th Day of January 2024.

Published in pamphlet form by authority of the City Council of the City of Galena, Jo Daviess County, Illinois, this 8th Day of January 2024.

STATE OF ILLINOIS)
) City of Galena
COUNTY OF JO DAVIESS)

CERTIFICATE

I, Mary Beth Hyde, certify that I am the duly elected municipal clerk of the City of Galena, JoDaviess County, Illinois.

I further certify that on the 8th Day of January 2024, the Corporate Authorities of said municipality passed and approved Ordinance No. O.24.01 entitled **AN ORDINANCE ANNEXING 3.74 ACRES OF TERRITORY IN RAWLINS TOWNSHIP**, which provided by its terms that it should be published in pamphlet form.

The pamphlet form of Ordinance No. O.24.01 including the Ordinance and a cover sheet thereof, was prepared, and a copy of such Ordinance was posted in the municipal building, commencing the 9th Day of January 2024 and commencing for at least ten (10) days thereafter.

Dated at Galena, Illinois, this 9th Day of January 2024.


Mary Beth Hyde, City Clerk

(Seal)

ORDINANCE NO. O.24.01

ORDINANCE ANNEXING 3.74 ACRES OF TERRITORY IN RAWLINS TOWNSHIP

WHEREAS, a written Petition, signed by Donald Wienen and Sandra Wienen, dba DSW Investments, LLC ("Owner"), the Owner of territory hereinafter described, has been filed with the City Clerk of the City of Galena, Jo Daviess County, Illinois, requesting that said territory be annexed to the City of Galena; and

WHEREAS, there are no (0) electors residing within the said territory; and

WHEREAS, the said territory is not within the corporate limits of any municipality, but is contiguous to the City of Galena; and

WHEREAS, on October 10, 2023, the City Council approved an ordinance authorizing the execution of an annexation agreement with the Owner; and

WHEREAS, the annexation agreement was executed by the parties on October 13, 2023; and

WHEREAS, as part of the annexation agreement, the City of Galena agreed to annex the subject territory within 60 days of the execution of the agreement; and

WHEREAS, in accordance with the Illinois Compiled Statutes (65 ILCS 5/7), legal notices regarding the intention of the City to annex said territory have been sent to all public bodies required to receive such notice; and

WHEREAS, copies of such notices required to be recorded, if any, have been placed as record in the office of the Recorder of Deeds of Jo Daviess County; and

WHEREAS, it is in the best interest of the City of Galena that said territory be annexed hereto.

NOW, THEREFORE, BE IT ORDAINED by the Mayor and City Council of the City of Galena, Jo Daviess County, Illinois as follows:

SECTION I: That the following described territory, described in the Plat of Annexation attached as Exhibit A and made a part of this Ordinance), is hereby annexed to the City of Galena, Jo Daviess County, Illinois, and that the boundary lines of Galena be and are hereby enlarged and extended to include, within the corporate boundaries thereof, the territory above described and as shown in the Plat of Annexation.

SECTION II: That the City Clerk is hereby directed to record with the Recorder and to file with the County Clerk, a certified copy of this Ordinance, together with an accurate map of the territory annexed.

SECTION III: That this Ordinance shall be in full force and effect after its passage, approval and publication as provided by law.

SECTION IV: Passed and approved this 8th day of January, A.D., 2024.

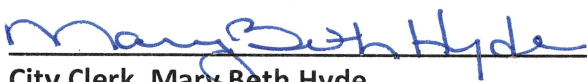
AYES: Bernstein, Johnson, Kieffer, Tegtmeyer, Westemeier, Wienen, Renner

NAYS: None



Mayor, Terry Renner

ATTEST:



City Clerk, Mary Beth Hyde

Prepared by:

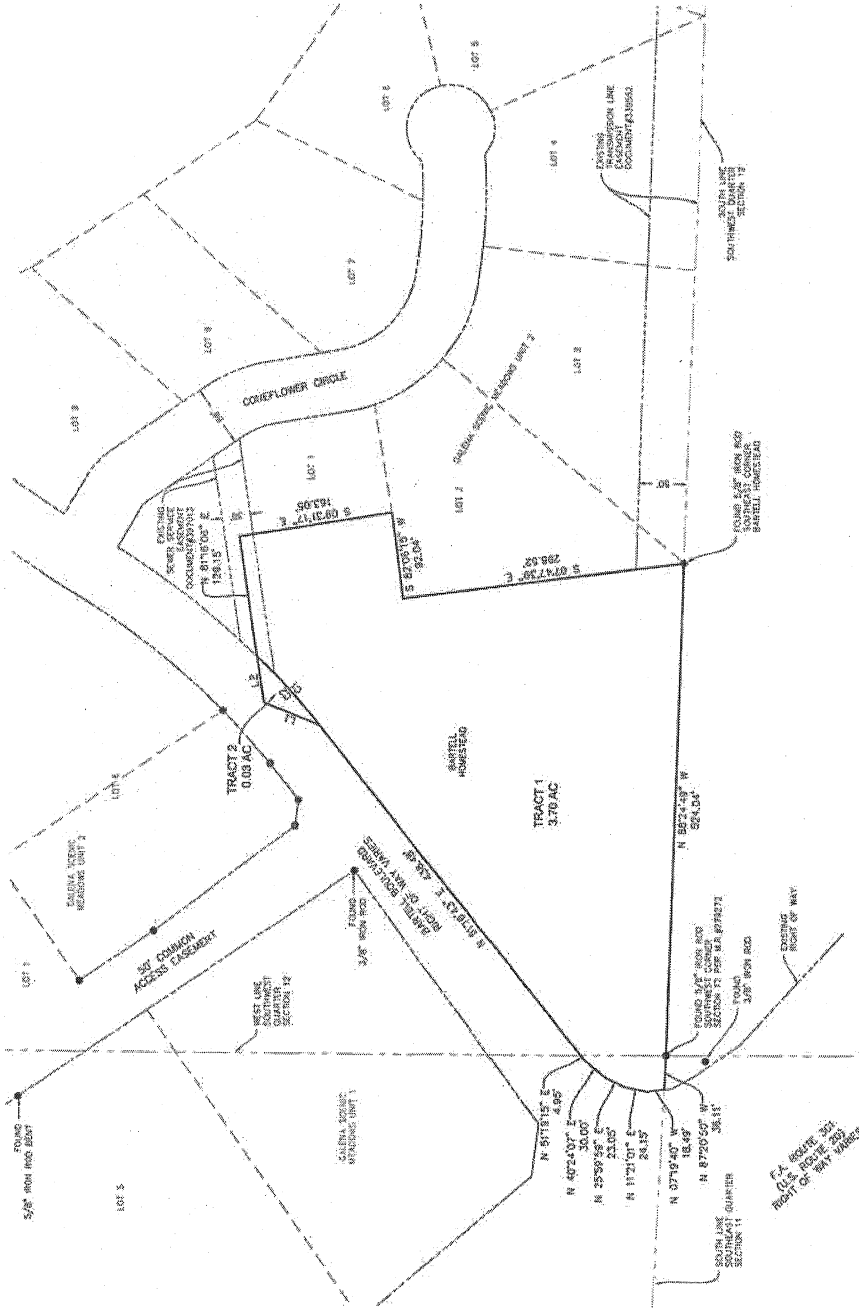
Joe Nack, City Attorney
101 Green Street
Galena, IL 61036

Return to:

Mark Moran
City Administrator
101 Green Street
Galena, IL 61036

EXHIBIT A

ANNEXATION PLAT THE BARTELL HOMESTEAD PART OF THE SOUTHWEST QUARTER SECTION 12 & PART OF THE SOUTHEAST QUARTER SECTION 11, TOWNSHIP 28 NORTH, RANGE 1 WEST OF THE 4TH P.M., JO DAVIESS COUNTY, ILLINOIS



Line #	Length	Direction	Area
1	103.34'	N 87°15'15" E	103.34'
2	103.34'	N 87°15'15" E	103.34'
3	103.34'	N 87°15'15" E	103.34'

Line #	Length	Direction	Area
1	103.34'	N 87°15'15" E	103.34'
2	103.34'	N 87°15'15" E	103.34'
3	103.34'	N 87°15'15" E	103.34'

Line #	Length	Direction	Area
1	103.34'	N 87°15'15" E	103.34'
2	103.34'	N 87°15'15" E	103.34'
3	103.34'	N 87°15'15" E	103.34'



AREA TABLE:
TRACT 1: 3.76 AC
TRACT 2: 0.03 AC
TOTAL AREA: 3.79 AC

THE CITY OF CALUMET, ILLINOIS
APPROVED THIS 11th DAY OF MAY, 2023
BY THE CITY CLERK
J. J. JONES
CITY CLERK

PRIMAX PROPERTIES, LLC
1100 E. MOREHEAD STREET
CHARLOTTE, NC, 28204-2815

KLINGNER & ASSOCIATES, P.C.
Engineers • Architects • Surveyors
Davenport, Iowa
www.klingner.com

EXHIBIT A

TRACT 1

LEGAL DESCRIPTION:

PART OF THE SOUTHWEST QUARTER OF SECTION 12 & PART OF THE SOUTHEAST QUARTER OF SECTION 11, TOWNSHIP 28 NORTH, RANGE 1 WEST OF THE 4TH P.M., ALSO KNOWN AS THE BARTELL HOMESTEAD, JO DAVIESS COUNTY, ILLINOIS, MORE PARTICULARLY DESCRIBED AS FOLLOWS:

BEGINNING AT THE INTERSECTION OF LOT 1, GALENA SCENIC MEADOWS UNIT 2, ALSO BEING A POINT ON THE SOUTH RIGHT OF WAY LINE OF BARTELL BOULEVARD; THENCE, ALONG THE WEST LINE OF SAID OF SAID GALENA SCENIC MEADOWS UNIT 2 FOR THE NEXT FOUR COURSES, NORTH 81 DEGREES 16 MINUTES 06 SECONDS EAST, A DISTANCE OF 129.15 FEET; THENCE, SOUTH 09 DEGREES 31 MINUTES 17 SECONDS EAST, A DISTANCE OF 163.05 FEET; THENCE, SOUTH 82 DEGREES 06 MINUTES 15 SECONDS WEST, A DISTANCE OF 92.04 FEET; THENCE, SOUTH 07 DEGREES 47 MINUTES 39 SECONDS EAST, TO THE SOUTH CORNER OF LOT 2, GALENA SCENIC MEADOWS UNIT 2, ALSO BEING A POINT OF THE SOUTH LINE OF THE SOUTHWEST QUARTER OF SAID SECTION 12, A DISTANCE OF 298.52 FEET; THENCE, ALONG SAID SOUTH LINE, NORTH 88 DEGREES 24 MINUTES 49 SECONDS WEST, TO THE SOUTHWEST CORNER OF SAID SECTION 12, A DISTANCE OF 524.04 FEET; THENCE, ALONG THE SOUTH LINE OF THE SOUTHEAST QUARTER OF SAID SECTION 11, NORTH 87 DEGREES 20 MINUTES 50 SECONDS WEST, TO THE EAST RIGHT OF WAY LINE OF F.A. ROUTH 301 (U.S. ROUTE 20), A DISTANCE OF 36.11 FEET; THENCE, ALONG SAID EAST RIGHT OF WAY LINE FOR THE NEXT FIVE COURSES, NORTH 07 DEGREES 19 MINUTES 40 SECONDS WEST, A DISTANCE OF 18.49 FEET; THENCE, NORTH 11 DEGREES 21 MINUTES 01 SECONDS EAST, A DISTANCE OF 24.15 FEET; THENCE, NORTH 25 DEGREES 59 MINUTES 59 SECONDS EAST, A DISTANCE OF 23.05 FEET; THENCE, NORTH 40 DEGREES 24 MINUTES 07 SECONDS EAST, A DISTANCE OF 30.00 FEET; THENCE, NORTH 51 DEGREES 19 MINUTES 15 SECONDS EAST, TO THE SOUTH RIGHT OF WAY LINE OF BARTELL BOULEVARD, A DISTANCE OF 4.95 FEET; THENCE, ALONG SAID SOUTH RIGHT OF WAY LINE FOR THE NEXT TWO COURSES, NORTH 51 DEGREES 16 MINUTES 43 SECONDS EAST, TO AN ARC, A DISTANCE OF 438.48 FEET; THENCE, ALONG SAID ARC, A DISTANCE OF 105.24 FEET, SAID ARC HAVING A RADIUS OF 834.00 FEET, SAID ARC HAVING A CHORD BEARING OF NORTH 47 DEGREES 55 MINUTES 19 SECONDS EAST, AND A CORD DISTANCE OF 105.17 FEET, TO THE POINT OF BEGINNING, CONTAINING 3.70 ACRES, MORE OR LESS.

FOR THE ABOVE DESCRIPTION THE SOUTH LINE OF THE SOUTHWEST QUARTER OF SAID SECTION 12 HAS A BEARING OF NORTH 88 DEGREES 24 MINUTES 49 SECONDS WEST.

EXHIBIT A

TRACT 2

LEGAL DESCRIPTION:

PART OF THE SOUTHWEST QUARTER OF SECTION 12 & PART OF THE SOUTHEAST QUARTER OF SECTION 11, TOWNSHIP 28 NORTH, RANGE 1 WEST OF THE 4TH P.M., ALSO KNOWN AS THE BARTELL HOMESTEAD, JO DAVIESS COUNTY, ILLINOIS, MORE PARTICULARLY DESCRIBED AS FOLLOWS:

BEGINNING AT THE INTERSECTION OF LOT 1, GALENA SCENIC MEADOWS UNIT 2, ALSO BEING A POINT ON THE SOUTH RIGHT OF WAY LINE OF BARTELL BOULEVARD; THENCE, ALONG AN ARC ALONG THE SOUTH RIGHT OF WAY LINE OF BARTELL BOULEVARD, A DISTANCE OF 97.72 FEET, SAID ARC HAVING A RADIUS OF 834.00 FEET, SAID ARC HAVING A CHORD BEARING OF SOUTH 47 DEGREES 39 MINUTES 49 SECONDS WEST, AND A CHORD DISTANCE OF 97.66 FEET; THENCE, NORTH 21 DEGREES 29 MINUTES 49 SECONDS EAST, A DISTANCE OF 62.56 FEET; THENCE, SOUTH 81 DEGREES 16 MINUTES 06 SECONDS EAST, A DISTANCE OF 49.85 FEET, TO THE POINT OF BEGINNING, CONTAINING 0.03 ACRES, MORE OR LESS.

FOR THE ABOVE DESCRIPTION THE SOUTH LINE OF THE SOUTHWEST QUARTER OF SAID SECTION 12 HAS A BEARING OF NORTH 88 DEGREES 24 MINUTES 49 SECONDS WEST.