

ADDENDUM #1

2025 PICKLEBALL & VOLLEYBALL COURTS

ADDENDUM #1
FEBRUARY 17, 2025
NUMBER OF PAGES: 1

NOTICE:

This addendum is issued to modify, explain or correct the original drawings, specifications and/or previous addenda and is hereby made part of the Contract Documents. **Please attach this Addendum to the specifications in your possession and note receipt of the Addendum on the first page of your bid.**

CHANGES TO SPECIFICATIONS:

1. CHAIN LINK FENCE AND GATES SPECIFICATIONS, PAGE 2: Section 2.2 ROUND STEEL PIPE FENCE FRAMEWORK, PARAGRAPH A. shall be updated to the following:
 - A. Round steel pipe, rail and braces: Schedule 80 or SS40 standard weight pipe, in accordance with ASTM F1083, 1.8 oz/ft² hot dip galvanized zinc exterior and 1.8 oz/ft² hot dip galvanized zinc interior coating.
Regular Grade: Minimum steel yield strength 35,000 psi for Schedule 80; and 50,000 psi for SS40.
2. ASPHALT PICKLEBALL COURT SURFACE COLOR COATING SYSTEM, PAGE 2-3: PART 2 PRODUCTS, 2.1 MANUFACTURER shall have the following acceptable manufacturers added:
 - B. Plexipave, ICP Building Solutions Group, 150 Dascomb Rd., Andover, MA 01810. Toll Free 800-225-1141. Email phogan@icpgroup.com
 - C. Elite Sport Coating System, U.S. Tennis Court Construction Co., 1301 Canal Street, Lockport, IL 60441. Office 815-588-3700. Email ustenniscourt@gmail.com

CHANGES TO DRAWINGS:

1. PLAN SHEET A4: The following statement shall be added to this plan sheet: SS40 (50,000 psi yield strength) shall be an acceptable material for round steel pipe fence framework in lieu of Schedule 80 (35,000 psi yield strength). Driven post depth and pipe diameter shall be per details on Sheet A4.

End of Addendum

PART 2 – PRODUCTS

2.1 FABRIC

A. General: Provide fence fabric manufactured from wire meeting the requirements of ASTM A 817. Use No. 9 gauge wire woven in a 2 inch mesh. Construct knuckled selvedge at the top and bottom of the fabric.

B. PVC-coated Fabric: Comply with ASTM F 668, Class 2b.

1. Apply PVC coating to zinc or aluminum-coated wire prior to weaving fabric.

2. PVC coating color black, complying with ASTM F 934.

2.2 ROUND STEEL PIPE FENCE FRAMEWORK

A. Round steel pipe, rail and braces: Schedule 80 or SS40 standard weight pipe, in accordance with ASTM F1083, 1.8 oz/ft² hot dip galvanized zinc exterior and 1.8 oz/ft² hot dip galvanized zinc interior coating.

Regular Grade: Minimum steel yield strength 35,000 psi for Schedule 80; and 50,000 psi for SS40.

B. Typical post and rail size for normal Commercial / Industrial applications

****Refer to drawings, Sheet A4, for specified pipe diameters based on fence height and presence of acoustical panels.****

Post Use	Fence Height		
	48" and under (nominal diameter)	48" to 96" (nominal diameter)	Greater than 96" (nominal diameter)
Line Post	2"	2 1/2"	3"
Terminal Post*	2 1/2"	3"	4"
Top/intermediate Rail Braces	1 1/4"	1 1/4"	1 1/4"
Gate Post	Refer to contract documents and ASTM F 900		
*Includes corner, angle, end, and pull posts.			

C. Polymer coated posts, rails, braces shall have a PVC coating fused and adhered to the exterior zinc coating of the galvanized pipe in accordance with ASTM F1043. The minimum thickness of the PVC coating shall be 10-mils. Color black per ASTM F934.

1.5 QUALITY ASSURANCE

- A. Manufacturer's Qualifications:
 - 1. Manufacturer regularly engaged, for past 5 years, in manufacture of asphalt pickleball court surface color coating systems of similar type to that specified.
 - 2. United States owned company.
 - 3. Member: ASBA.
- B. Applicator's Qualifications:
 - 1. Applicator regularly engaged, for past 3 years, in application of pickleball court surface color coating systems of similar type to that specified.
 - 2. Employ persons trained for application of pickleball court surface color coating systems.
 - 3. Applicator must be authorized installer of the surfacing brand used.

1.6 DELIVERY, STORAGE, AND HANDLING

- A. Delivery and Acceptance Requirements: Deliver materials to site in manufacturer's original, unopened containers and packaging, with labels clearly identifying product name and manufacturer.
- B. Storage and Handling Requirements:
 - 1. Store and handle materials in accordance with manufacturer's instructions.
 - 2. Keep materials in manufacturer's original, unopened containers and packaging until application.
 - 3. Store materials in clean, dry area indoors.
 - 4. Store materials out of direct sunlight.
 - 5. Keep materials from freezing.
 - 6. Protect materials during storage, handling, and application to prevent contamination or damage.
 - 7. Close containers when not in use.
 - 8. Retain manufacturer batch codes on each container and application dates, for warranty purposes.

1.7 AMBIENT CONDITIONS

- A. Do not apply asphalt pickleball court surface color coating system when air or surface temperatures are below 50°F (10°C) during application or within 24 hours after application.
- B. Do not apply asphalt pickleball court surface color coating system when rain is expected during application or within 24 hours after application.

PART 2 PRODUCTS

2.1 MANUFACTURER

- A. SportMaster Sport Surfaces, PO Box 2277, 2520 South Campbell Street, Sandusky, Ohio 44870. Toll Free 800-326-1994. Fax 877-825-9226. Website www.sportmaster.net. E-mail moreinfo@sportmaster.net.

- B. Plexipave, ICP Building Solutions Group, 150 Dascomb Rd., Andover, MA 01810. Toll Free 800-225-1141. Email phogan@icpgroup.com
- C. Elite Sport Coating System, U.S. Tennis Court Construction Co., 1301 Canal Street, Lockport, IL 60441. Office 815-588-3700. Email ustenniscourt@gmail.com

All other brands must be pre-approved by the architect/owner, 7 days prior to the bid date. If submitting another brand, bidder must furnish copies of all submittal documents under section 1.4

2.2 MATERIALS

- A. Asphalt Pickleball Court Surface Color Coating System: *PickleMaster Surfacing System by SportMaster Sport Surfaces*
- B. Patch Binder: SportMaster “Acrylic Patch Binder”.
 - 1. 100 percent acrylic emulsion liquid binder.
 - 2. Mix on-site with sand and cement.
 - 3. Levels and repairs low spots and depressions up to 3/4 inch deep in asphalt pavement.
 - 4. Fills Cracks in Asphalt up to 1” in width.
 - 5. Weight per Gallon at 77 Degrees F: 8.8 lbs., plus or minus 0.5 lbs.
- C. Filler Course: SportMaster “Acrylic Resurfacer”.
 - 1. 100 percent acrylic emulsion resurfacer.
 - 2. Mix on-site with silica sand.
 - 3. Apply to asphalt surfaces or previously colored acrylic surfaces in preparation of color coating system.
 - 4. Chemical Characteristics, by Weight, Minimum:
 - a. Acrylic Emulsion: 44.0 percent.
 - b. Hiding Pigment: 2.0 percent.
 - c. Mineral Inert Fillers: 5.0 percent.
 - d. Film Formers, Additives: 0.2 percent.
 - e. Water: 45.0 percent.
 - 5. Weight per Gallon at 77 Degrees F: 8.5 lbs., plus or minus 0.5 lbs.
 - 6. Non-Volatile Material: 27.5 percent, plus or minus 5.0 percent.
 - 7. Color: Neutral.
- D. Color Coating: SportMaster “PickleMaster”.
 - 1. 100% acrylic emulsion fortified with specialty aggregate for non-aggressive texture
 - 2. Mix on-site with ColorPlus Pigment and water.
 - 3. Specialized coating system for pickleball court surfaces.
 - 4. Weight per Gallon at 77 Degrees F: 12 lbs., plus or minus 0.5 lbs.
 - 5. Colors: Sandstone – No Volley; Blue – Court; Green - Border

**** Confirm color choices and layout with City of Galena before ordering materials.****
- E. Line Markings Primer: SportMaster “Stripe-Rite”.
 - 1. 100 percent acrylic emulsion primer, clear drying.
 - 2. Primes line markings and prevents bleed-under for sharp lines.
 - 3. Chemical Characteristics, by Weight, Nominal:
 - a. Acrylic Emulsion: 38.0 percent.



BARANSKI HAMMER
MORETTA & SHEEHY
ARCHITECTS AND PLANNERS

Copyright BHMS 2025

1101 S BENCH STREET
GALENA, IL 61036
Phone: 815-777-3960



11/30/2024
LICENSE EXPIRATION DATE

Drawn by: JB, WB
Checked by: WC, DM
Project No.: BH24007

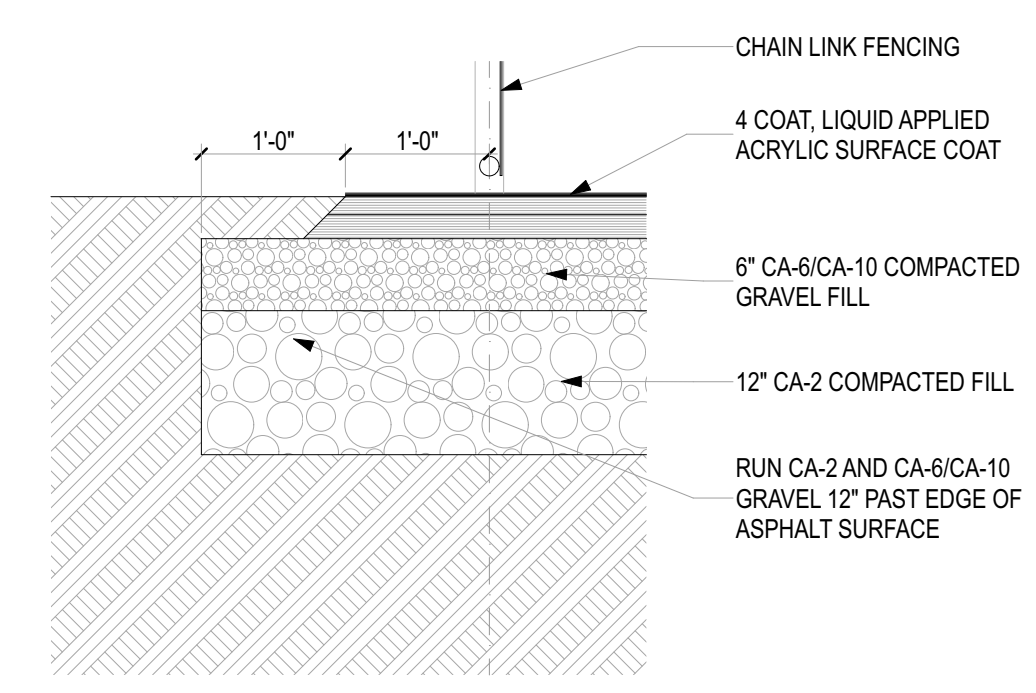
NO.	DATE	ISSUED FOR
	10/3/24	FINAL PERMIT / BID SET

RECREATION PARK PICKLEBALL COURTS

1721 FIELD STREET
GALENA, ILLINOIS

DETAILS

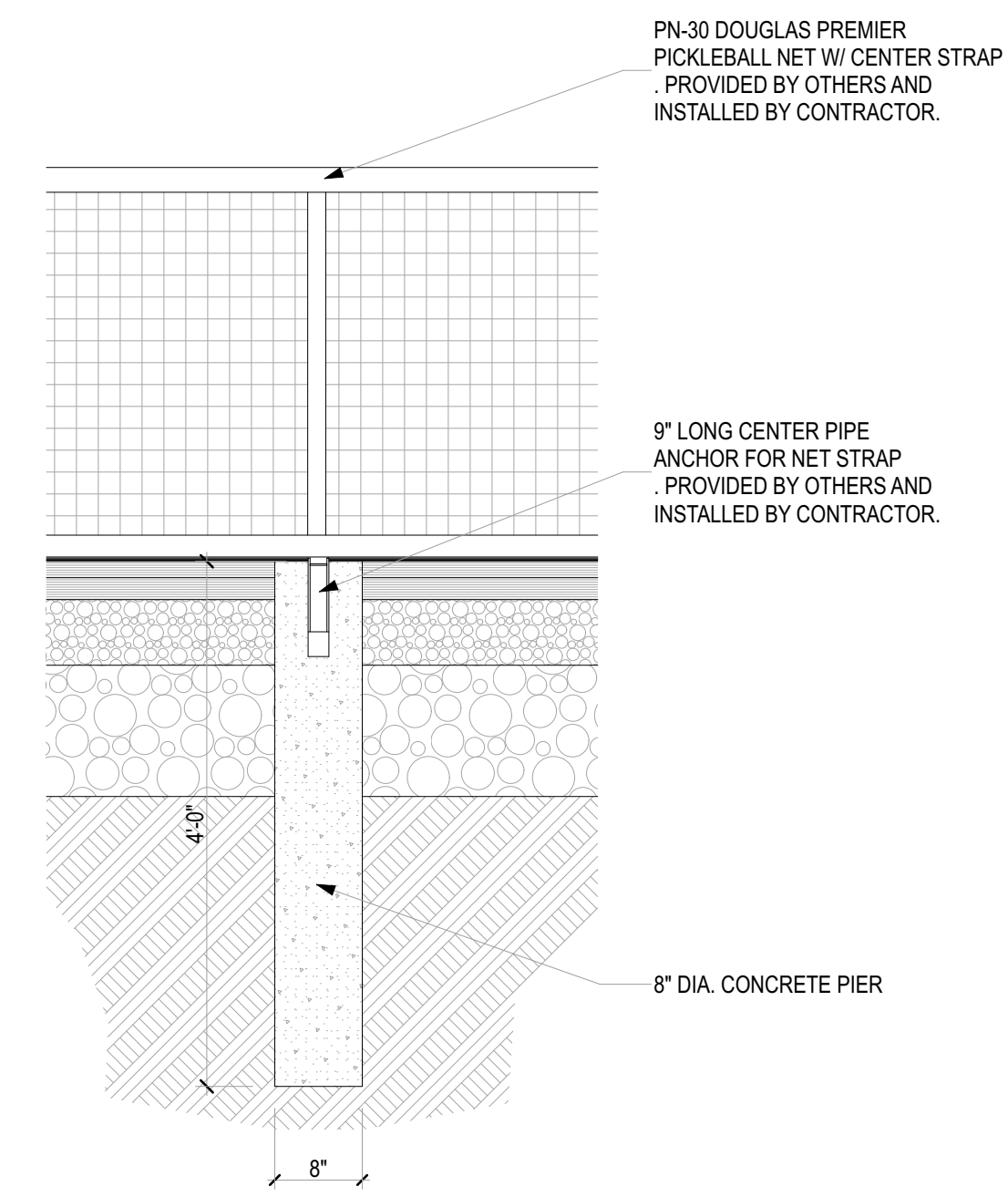
A4



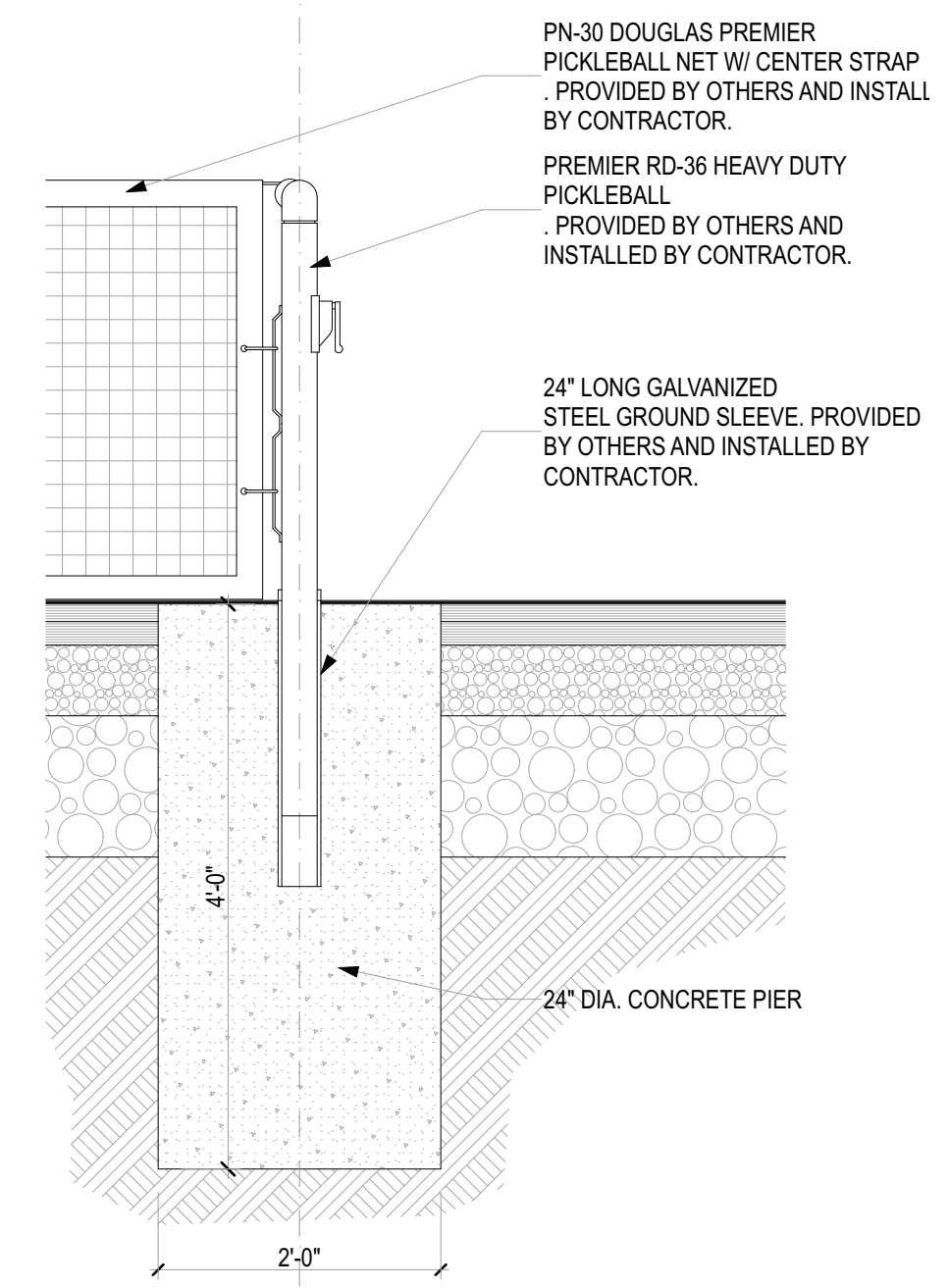
NOTES:

- NETS, POSTS, AND BENCHES PROVIDED BY OTHERS AND INSTALLED BY CONTRACTOR
- CONCRETE PIERS FOR NETS AND BENCHES TO BE INSTALLED AFTER ASPHALT BY SPORT COURT SURFACING CONTRACTOR.
- SS40 (50,000 PSI YIELD STRENGTH) SHALL BE AN ACCEPTABLE MATERIAL FOR ROUND STEEL PIPE FENCE FRAMEWORK IN LIEU OF SCHEDULE 80 (35,000 PSI YIELD STRENGTH). DRIVEN POST DEPTH AND PIPE DIAMETER SHALL BE PER DETAILS ON SHEET A4.

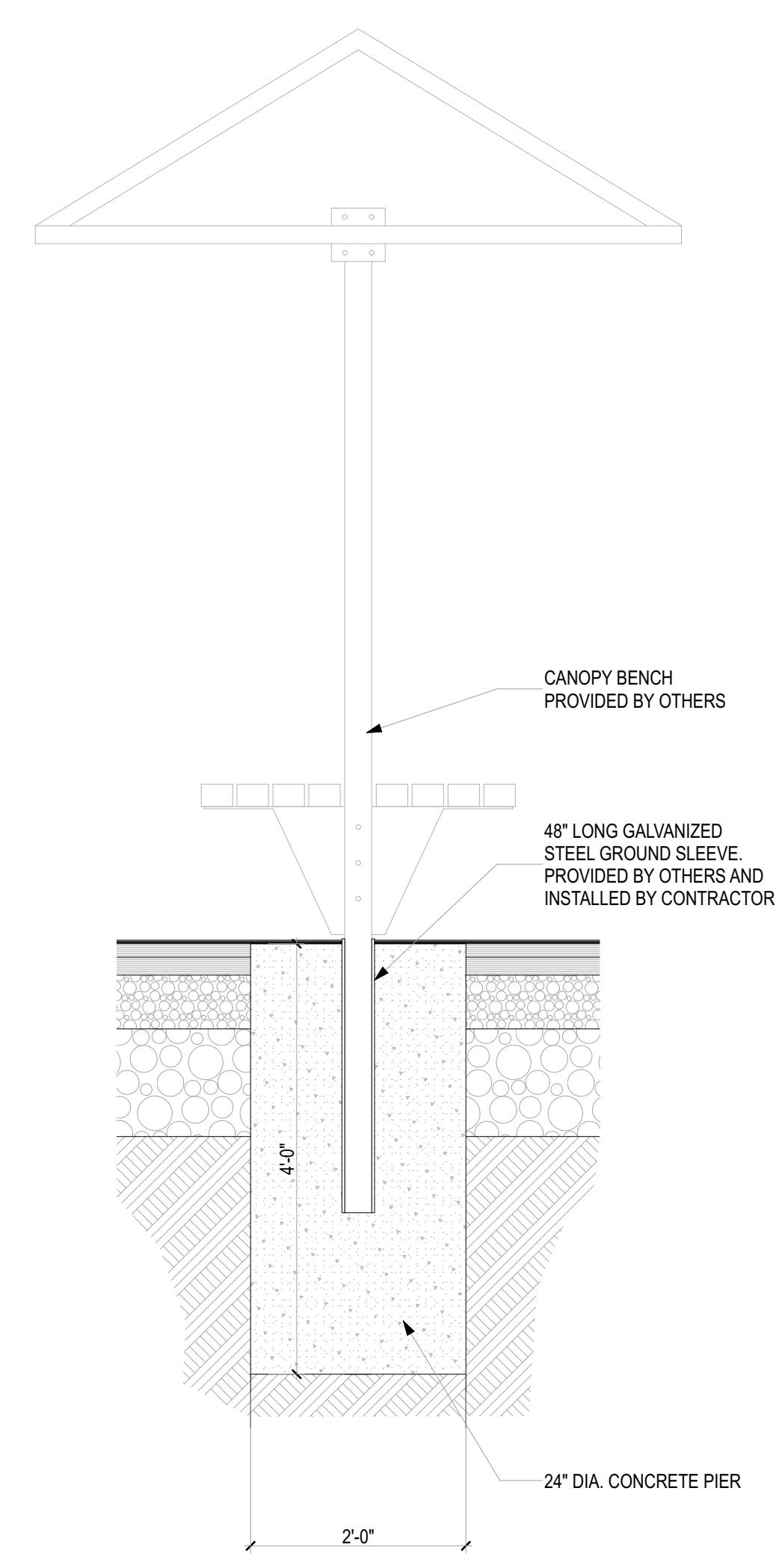
2
A4 PAVEMENT EDGE DETAIL
SCALE: 3/4" = 1'-0"



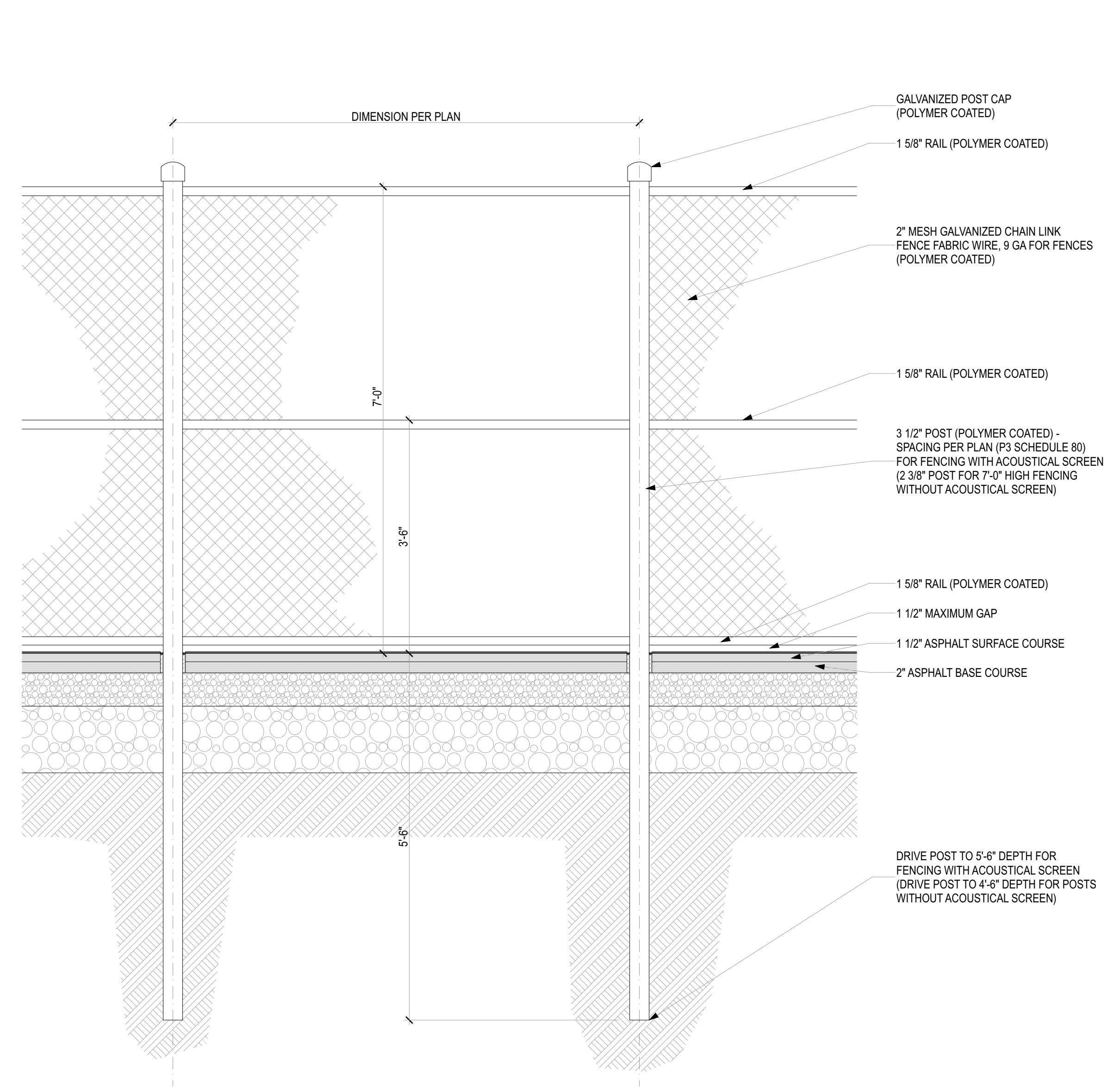
3
A4 NET CENTER ANCHOR DETAIL
SCALE: 3/4" = 1'-0"



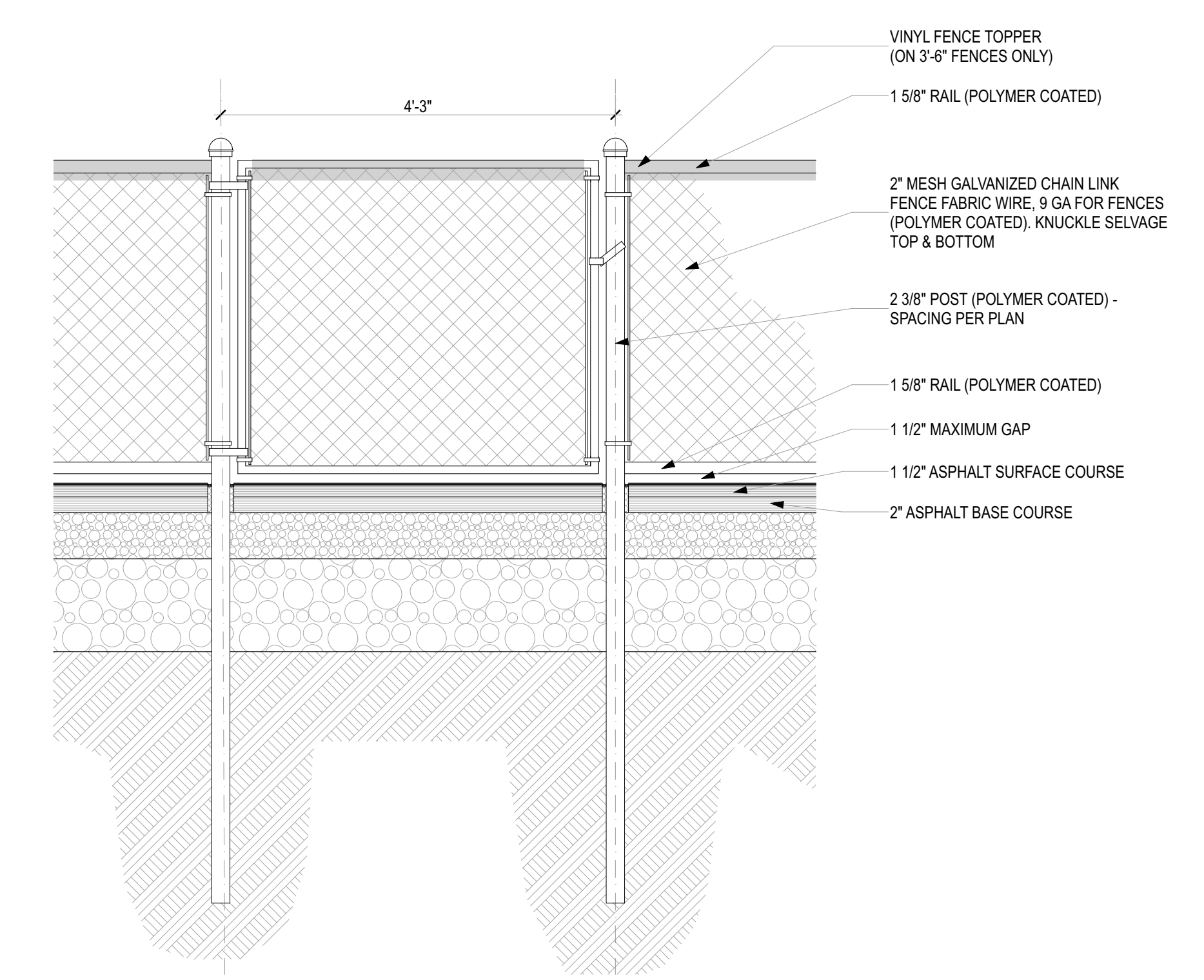
4
A4 NET POST DETAIL
SCALE: 3/4" = 1'-0"



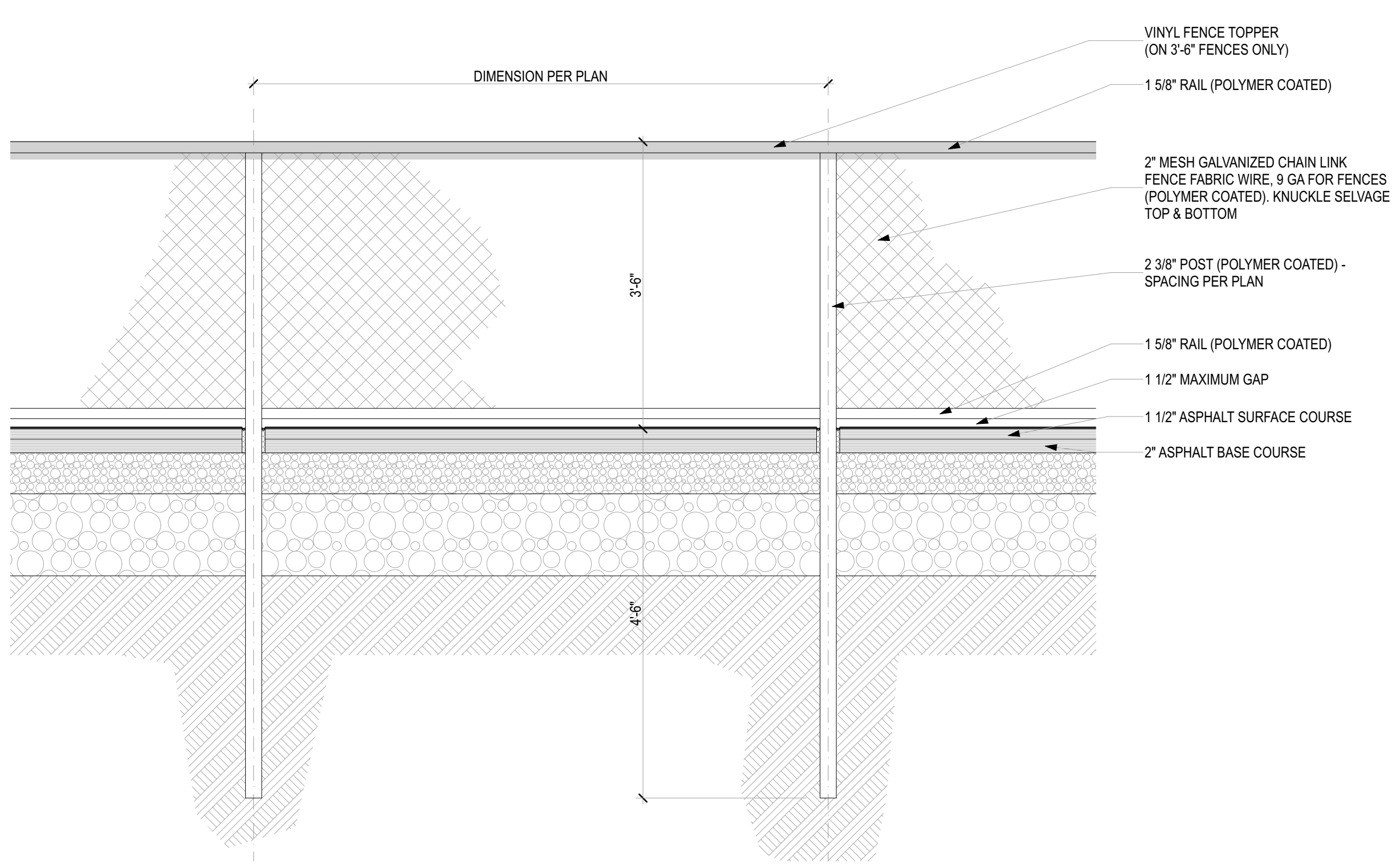
5
A4 CABANA BENCH MOUNTING DETAIL
SCALE: 3/4" = 1'-0"



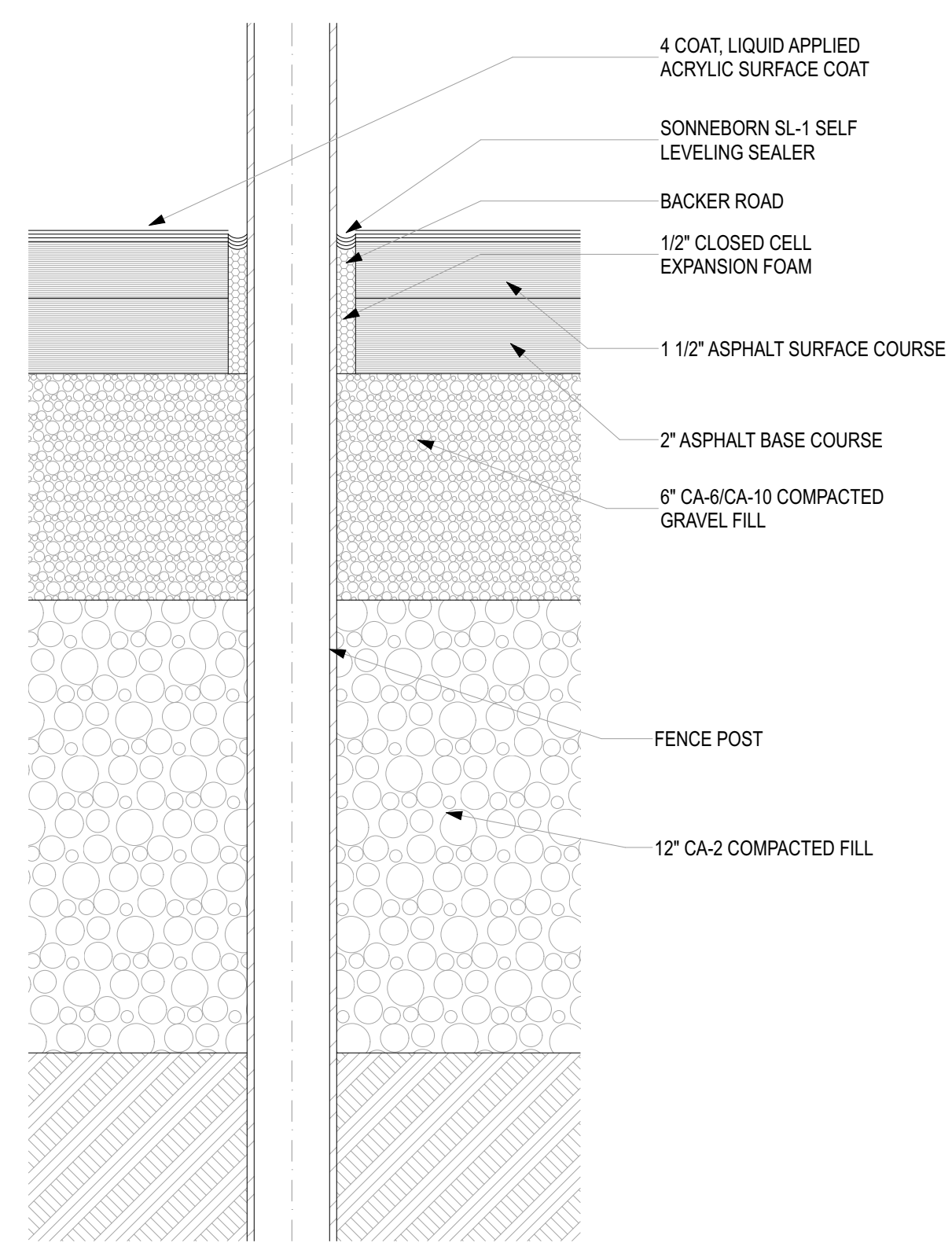
1
A4 7'-0" HIGH FENCE DETAIL
SCALE: 3/4" = 1'-0"



6
A4 TYPICAL GATE DETAIL
SCALE: 3/4" = 1'-0"



7
A4 3'-6" HIGH FENCE DETAIL
SCALE: 3/4" = 1'-0"



8
A4 FENCE POST EXPANSION JOINT DETAIL
SCALE: 3" = 1'-0"

B:\Microsoft\Drawings\27 - Recreation Park Pickleball Courts\Recreation Park Pickleball Courts.dwg 1/23/25